

PARAMETER

Distinctive Character
Superior Performance

Focal Length	16 mm	25 mm	35 mm	50 mm	75 mm	100 mm	125 mm
Colour	Silvery						
Mount	PL / EF						
Aperture	T2.8-T22		T2.1-T22				
Image Circle	φ46.5mm (VV/FF)						
Construction of Optics	14 Elements in 10 Groups	12 Elements in 11 Groups	11 Elements in 9 Groups	9 Elements in 7 Groups		10 Elements in 8 Groups	
Flange Distance	52mm (PL) / 44mm (EF)						
Close Focus (from sensor plane)	0.25m / 10in	0.3m / 1ft		0.46m / 1.6ft6in	0.6m / 2ft	0.7m / 2ft4in	0.79m / 2ft7in
Iris Control	Manual (50°)	Manual (68°)	Manual (63°)	Manual (58°)	Manual (68°)	Manual (83°)	Manual (84°)
Focus Control	Manual (270°)						
Front Dia.	φ80mm / 3.15"						
Length (from lens front to flange plane)	87mm / 3.43"	100mm / 3.94"		87mm / 3.43"		100mm / 3.94"	
Iris Blade	16						
Filter Size	/						
Material	Aluminum Alloy						
Weight (Product)	≈930g	≈940g	≈834g	≈732g	≈865g	≈890g	≈924g

VESPID RETRO

16 T2.8 / 25 / 35 / 50 / 75 /
100 / 125mm T2.1 - VV / FF

Vista Vision Cinema Prime lenses



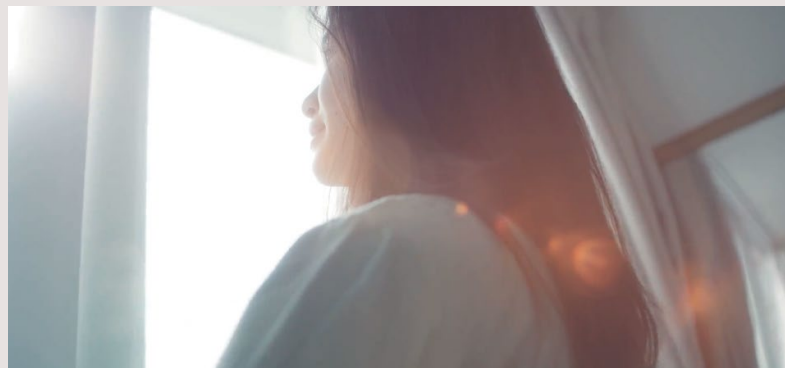


VESPID RETRO

Violet Tint, Alluring Reverie.

The amber coating adds a warm soft tint on the cold bluish image that renders skin tones beautifully.

Vintage colors and delicate nuances are suitable for the presentation of dreamlike surreal moments.



Vintage Look, Modern Composition.

Inspired by the industrial design of 1970s and Mondrian's paintings, the silver appearance is subtly embellished with red and blue inks for a retro yet vibrant look.

At the same time, the rounded elements and rectangular lettering present modernity with geometric balance.

Amber Hue, Craft Eternity.

The distinctive amber halation can be creatively controlled for authorial expression. The controllable warm tangerine glow evokes sun-soaked memories.

Rich in sensual and poetic naturalistic colors, suitable for Arthouse film and Atmospheric film that represents consciousness and dreams.

